

## President's Message—SFC

Dear SWA Members,

Here we are almost at the end of 2019! We've had a lot going on this year. Here are the coming events:

From October 26 to November 27 Skyline College will be having a show at our Art Center. We were fortunate in getting a grant from the San Bruno Community Foundation to be able to host this show for a full month. As soon as we have confirmed the hours, we'll send out more information.

Because of the Skyline show, our last demo of the year will be December 7 instead of the 3rd week in November. Artist Stella Zhang will do a Mixed Media demo.

Our last show of the year will start December 4 and run until January 10, 2020. Receiving is on November 30.

We will be voting on our new executive board at our January general meeting/demo. Prior to that our nominating committee will be sending out a proposed slate.

John Barrows was able to re-schedule Warren Chang for an oil portrait workshop on January 25–26, 2020.

Remember—your Annual membership renews on January 1. It is very helpful if you send your dues as early as possible!

Thank you for your support of SWA!

**Sharon Harris, SFC President**

[swagallery@societyofwesternartists.com](mailto:swagallery@societyofwesternartists.com)

## 2020 Executive Board Elections

The Current slate of candidates for 2020 is:

**President—James Stinger**

**1st VP—Fran Simontacchi**

**2nd VP—Jane Presta**

**Secretary—Carrie Drilling**

**Treasurer—Sharon Harris**

At our January 2020 General Meeting, members will vote for our slate of officers. If you would like to nominate an SWA member for any of those positions, please contact our Nominating Committee members: Jim Stinger, Jane Presta or Carrie Drilling. All nominations must be approved by the Nominating Committee.

**August/September Exhibit's Most Popular Painting**  
**"Selfie Under a Starry Night," oil by Bill Ramroth**

*Welcome to New and Returning Members: Patricia Jackson, Hermann Chen and Ginger Chen.*

## General Meeting and Demo

**Saturday, December 7 (1st Saturday), 1–3 PM**

**SWA Gallery**

**Stella Zhang**

## Multi-media Demonstration

Stella Zhang, who was born in Beijing, China, learned painting from her father, the acclaimed brush painter, Ping Zhang, who was a professor at the Central Academy of Fine Arts. Zhang attended the high school of Central Academy of Fine Arts, then matriculated to the Central Academy of Fine Arts where she received her BFA in Chinese Brush Painting in 1989.

She moved to Japan in 1990 where she studied Japanese Painting at Tama Fine Art University and later at Tokyo Art University, where she earned her MFA in Japanese Painting in 1996.

Zhang has lived in the United States since 2003. In the past 20 years, her work has been exhibited in Chinese, Japanese and American galleries and museums. Her work has been included in fine arts collections in many countries. She has published seven books.

Zhang teaches at Pacific Art League, Palo Alto.

## Sierra Art Trails Yosemite Open Studio Tour October 4–6

**See the link below for more information.**

<https://goldrushcam.com/sierrasuntimes/index.php/news/advertising-specials/20254-enjoy-the-17th-annual-sierra-art-trails-yosemite-foothills-open-studio-tour-october-4-5-6-2019>

Trowzers Akimbo of SJVC designed the catalog cover.

*If you would like to announce your shows or awards, please send the information to Laura Johnson at [dollsinmin@sbcglobal.net](mailto:dollsinmin@sbcglobal.net). We will include your information, space permitting.*

*Thanks to Judy Puccini and Laura Johnson for donations to SWA.*

## President’s Message–SJVC

Hello Members,

I enjoy this time of year, we’re starting up the new year as an organization and it’s a chance to review new ideas. So each new month allows me to improve my skills and share fellowship. What can I say, I’m having a great time. Let’s talk about what is going on with our organization.

Our last two demonstrations have allowed us to learn more about Nonrepresentational Art. We started with Marilyn Torchin, she discussed her work and provided members time to participate. We followed with Trowzers Akimbo, who developed a portrait in a Nonrepresentational style. Plenty of discussions supported these demonstrations.

We recently presented the SWA Scholarship, to a wonderfully talented student. Paige Wilson of Bucanan High of Clovis was the recipient of our financial assistance. Paige is preparing to attend the Los Angeles Academy of Art University. We were pleased that Paige’s family and Art Instructor were present at the ceremony We wish great success for Paige and offer our support.

I hope that the upcoming holidays find you warm and happy. Keep creative and stay in touch.

Thank You,

**Jesus Sepulveda**  
President, SWA-SJVC



SJVC scholarship winner Paige Wilson with her parents.  
(See some of her artwork on page 7)

**January–February Bulletin Deadline: December 3**

### SAN FRANCISCO CHAPTER CONTACTS

SFC President/ Gallery Coordinator	Sharon Harris	650-615-9856
1st Vice President/ Signature Awards/ Demos	Jim Stinger	650-493-6043
2nd Vice President/ Publicity	Judy Puccini	650-737-6084
Secretary	Barbara Todd	650-369-6859
Web Master	Sherry Vockel	650-922-7474
Treasurer/Rentals		
Director of Exhibits	Carrie Drilling	650-692-8998
Rentals	Jane Presta	650/872-0646
Corresponding		
Secretary	Doris Guzman	415-731-4038
Bulletin	Laura Johnson	650-533-1239
Membership	Loretta Hawkins	650-588-1154

### SAN JOAQUIN CHAPTER CONTACTS

SJVC President	Jesus Sepulveda	559-438-7633
1st Vice President	Linda Lamb	559-275-1597
2nd Vice President	Rudy Murietta	559-709-0486
Secretary	Shirlee Rehart	559-436-4552
Phone/Membership	Maxine Fargason	559-439-4403
Treasurer	Denise McGill	559-229-3025

### SCHEDULE OF EVENTS

#### SAN FRANCISCO CHAPTER

##### Skyline College Exhibit

October 26–November 27

##### December/January Exhibit

December 4–January 10, 2020

Receiving November 30

##### December

7 Board Meeting/Stella Zhang Demo

SFC Center Hours: 11–3, Wednesday–Saturday

#### SAN JOAQUIN CHAPTER

##### November

16 Year-end Potluck at the Sepulveda Home

The Bulletin is published 6 times per year (Jan/Feb, Mar/Apr, May/Jun, Jul/Aug, Sep/Oct, Nov/Dec)

Advertise your workshops, classes, etc.

Rates: \$10 per ad per newsletter—50 word maximum; \$20 per ad over 50 words. Make checks payable to SWA.

Deadlines for ads and news is the 3rd of Dec. (Jan/Feb), Feb. (Mar/Apr), Apr. (May/Jun) Jun. (Jul/Aug), Aug. (Sep/Oct), Oct. (Nov/Dec).

No brochures or printed matter accepted. Please type your ad and send with your check to: Laura Johnson, 3408 Beresford Ave., Belmont, CA 94002. You may send info to dollsminin@gmail.com. Check must be received before your ad can be published.

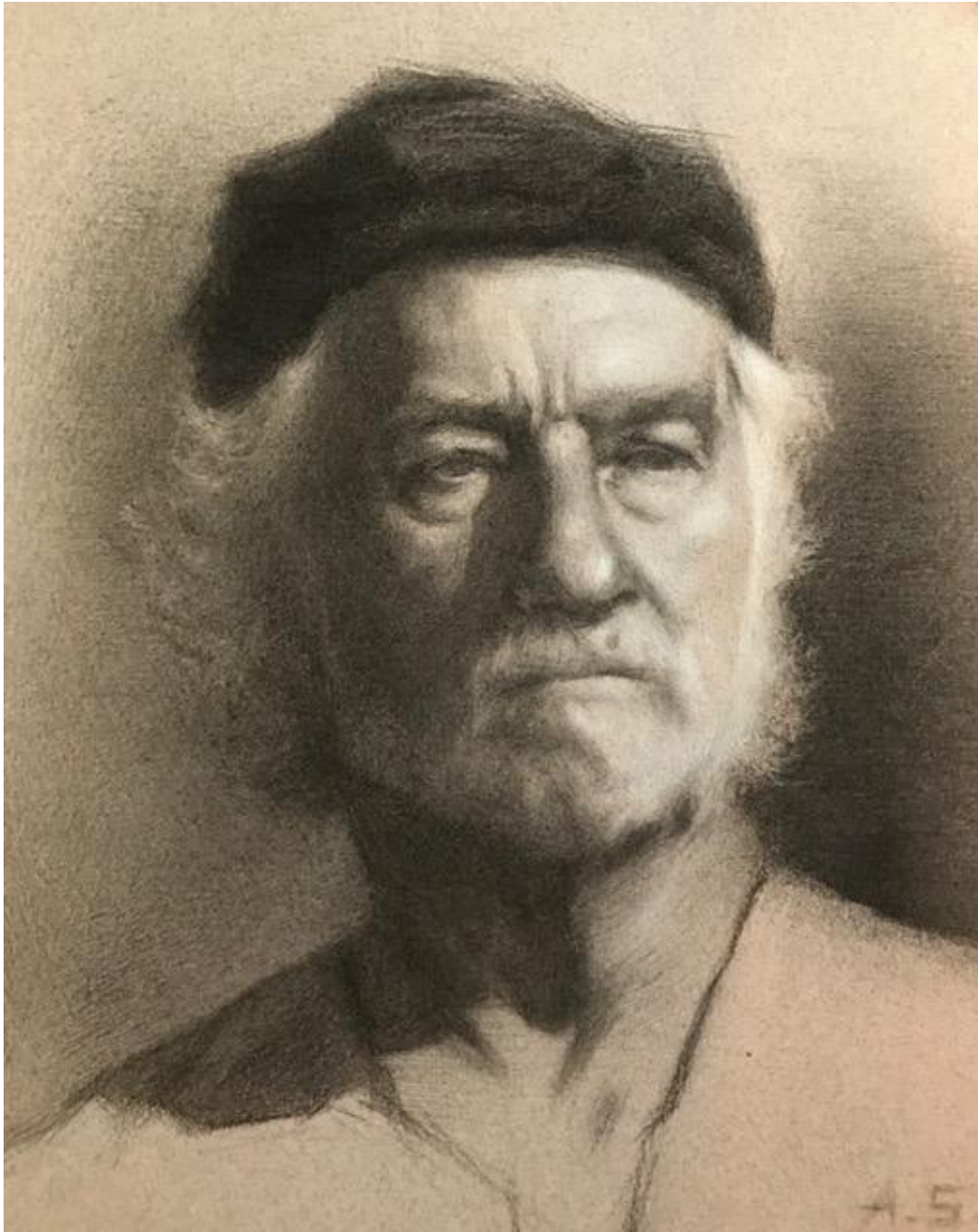
## 2019 SFC SWA Exhibition and Workshop Schedule

SWA Board Meeting/Demo	January 19, 2019
January/February 2019	January 9–February 23, 2019; Receiving January 5, 2019
Rental/Lauri Smith	February 8; Center not open from 1–3
SWA Board Meeting/Demo	February 16, 2019
Rental/Maurine Xavier	February 22; Center not open from 1:30 – 5:30
San Mateo School District Exhibit	February 24–March 8; Reception March 1, 5 pm–7 pm
March/April 2019	March 13–April 12; Receiving March 9
SWA Board Meeting/Demo	March 16, 2019
Shirley Green Mini Workshop	March 23; 1–4
April/May 2019	April 17–May 31 (5 weeks); Receiving April 13
SWA Board Meeting/Demo	April 20, 2019
Camille Lapointe Lyons Workshop	April 27–28, 2019
Kathleen Alexander Rental	May 3–5, 2019
SWA Board Meeting/Demo	May 18, 2019
69th Annual Exhibit	June 5–August 4, 2019; Receiving June 1 Opening Reception June 22, 1–3 pm Closing Reception August 4, 1:30–3 pm
SWA Board Meeting/Demo	June 15, 2019
SWA Board Meeting	July 20, 2019—if necessary
Kim English Workshop	July 27–28
August/September 2019	August 14–September 20, 2019; Receiving August 10
William Schneider Workshop	September 14–15, 2019
September/October 2019	September 25–October 25; Receiving September 21, 2019
SWA Board Meeting/Demo	September 28, 2019
SWA Board Meeting/Demo	October 19, 2019
Skyline College Exhibit	October 26–November 27, 2019
SWA Board Meeting/Demo	December 7, 2019
December/January	December 4–January 10, 2020; Receiving November 30, 2019

### 2019 SFC Demonstrations

February 16	Camille Lapointe Lyons	Watercolor Landscape Painting on Different Surfaces
March 16	Caroline Mustard	Painting with Gouache
April 20	Jim Gleeson	Abstracts Good and Bad
May 18	Joyce Barron Leopardo	Critique
June 15	Teresa Ruzzo	Pastel Landscape with Sky and Clouds
September 28	Robin Scholl	A Sky Demo Using Gouache, Watercolor and Pastel
October 19	Warren Chang	Oil Demo with Live Model
December 7	Stella Zhang	Multi-media Demonstration

## September/October 2019 Exhibit



**1st Place**  
*Unbreakable–Portrait of David from Life*  
Charcoal by Arena Shawn



**2nd Place**

*Optimism*

**Watercolor by Yvonne Newhouse SWA**



**3rd Place**  
*Carson River Tree Reflection*  
**Oil by Anneliese Drbal SWA**

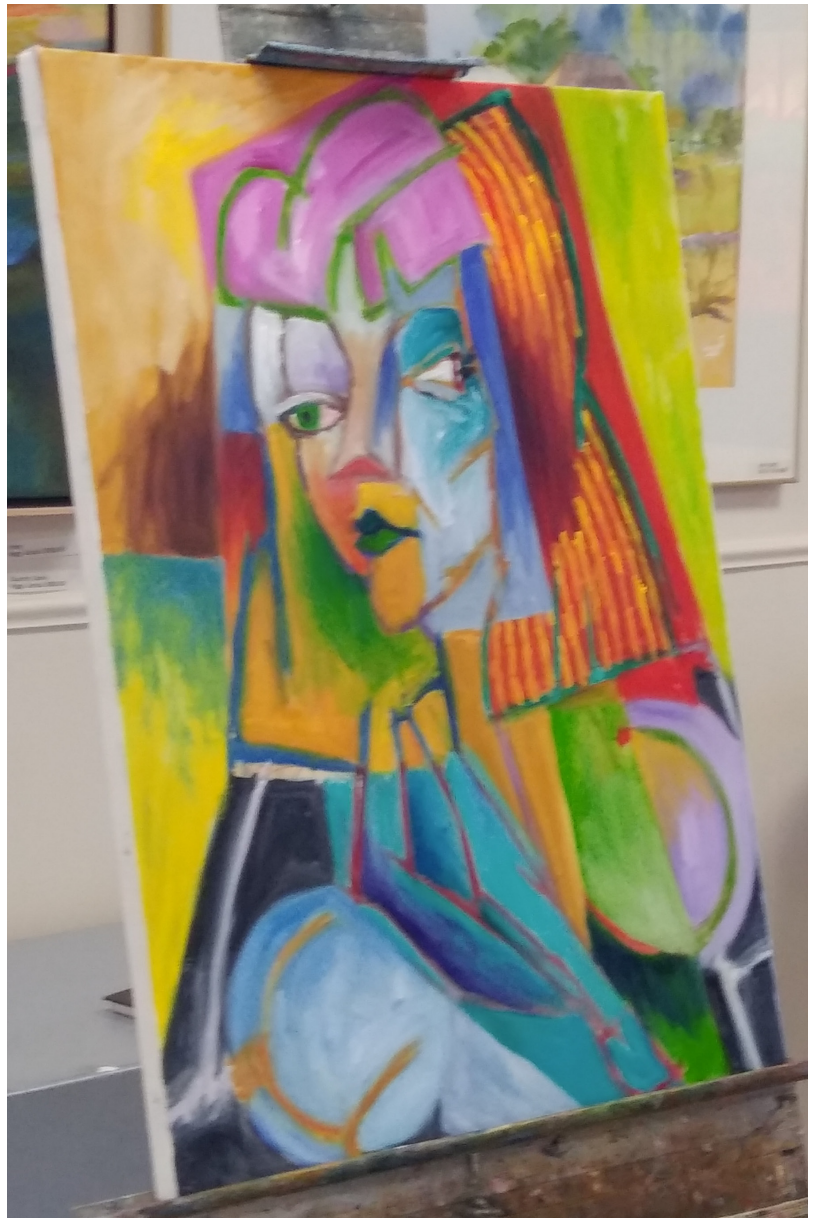


**Paintings by Paige Wilson,  
SJVC scholarship winner**





**Trowzers Akimbo SJVC Demo**



**Finished Painting**





### September/October 2019 Exhibit

<b>1st Place</b>	<b>Arena Shawn</b>	<b>Unbreakable-Portrait of David from Life</b>	<b>charcoal</b>
<b>2nd Place</b>	<b>Yvonne Newhouse SWA</b>	<b>Optimism</b>	<b>watercolor</b>
<b>3rd Place</b>	<b>Anneliese Drbal SWA</b>	<b>Carson River Tree Reflection</b>	<b>oil</b>

Thank you to Judges: Catherine Streets Delfs SWA, Shirley Green SWA and Decker Walker SWA

Participants: Shelley Goodman, Leona Moriarty SWA, Diane Liguori, Martha Bredwell, William Ramroth, Eva Klinger, Sharon Slusarz Harris SWA, Lynne Flodin, Sherry Vockel SWA, Barbara Alger, Fran Simontacchi, Yvonne Newhouse SWA, Carol Engelbrecht, Pat McMorrow, Suzan Pizzi, Arena Shawn, Anneliese Drbal SWA, Patricia Casteel, Christine McLaughlin, Diana Day Glynn SWA

Thank you to our Volunteers: Sharon Harris, Sherry Vockel, Leona Moriarty SWA, Faye Ward, Joe Crosetti, William Ramroth and Diane Liguori

---

## BILL

### Annual Membership Dues

**Due on or before January 1, 2020**

Dear SWA Member:

1. Your membership expiration date is 12/31/19. Please remit on or before January 1, 2020.  
San Joaquin Valley MEMBERS WILL BE BILLED BY SJVC.
2. BE SURE to include your address label if you receive the Bulletin by mail.

**Annual SWA Dues: \$45.00**

Tel. No: \_\_\_\_\_  
(helps to complete our roster)

ADDITIONAL DONATION: \_\_\_\_\_

**SWA**  
**527 San Mateo Avenue, San Bruno, CA 94066**

#### Directions to SWA San Bruno

**From 280:** take the San Bruno Exit east (towards the Airport). At San Mateo Avenue (approximately 1/4 mile) turn right on San Mateo Avenue.

**From 101:** exit San Bruno Avenue west over the freeway. San Mateo Avenue is immediately after the CalTrain elevated track, turn left. Caltrain station is two blocks south on San Mateo Avenue.