

President's Message—SFC

Dear SWA Members,

Our 69th Annual Exhibit is on display now! We hope you'll stop by and see all the wonderful art. As we've done for the last couple of years, we will have an opening reception and a closing reception. The opening reception is June 22 from 1 to 3 pm. This is a great time to meet the artists and socialize with your fellow members.

We have two workshops scheduled for the rest of the year. Kim English will be teaching Painting the Clothed Model in Oils on July 27–28. Kim did a few workshops for us in the past and is well known throughout the US. We expect his workshop to fill up so if you're interested, get your registration form in soon. The other workshop is William Schneider teaching Painterly Portraits with Pastels & Oils on September 14–15. William is also very well known throughout the US.

Would you be interested in a non-representational workshop? Please email me and let me know. We are looking at scheduling one of these this year also.

Thank you for your support of SWA!

Sharon Harris, SFC President

Thanks to Ann Basuino SWA, Joyce Barron Leopardo SWA, Lillian Wu SWA and Pam Della SWA for donations to SWA.

Rent the Gallery

The SWA gallery can be rented for meetings, classes, workshops and seminars. The rental includes floor space, tables, chairs and the use of the public facilities of the Art Center. The rental fee is \$60 for 1/2 day (4 hrs.) or \$120 for full day (8 hrs.). If you are interested, please contact Carrie Drilling at 650-692-8998; carriedrilling@gmail.com or Jane Presta at 650/872-0646; itsa.presta@gmail.com

Welcome to New and Returning Members: Reba Leon, Margo F. Bangert, Laurie Johnson Lepkowska, James Gleeson, Kavita Srinivasan and Linda Miller

Workshops

Kim English Oil Painting Quick Sketch, July 27–28

"Immediacy is important not only because it is often the nature of people but, for me, it is the most instinctive way to paint."

This class will concentrate on the ability to paint quickly and accurately, a sketch can be useful in many situations, Working in this way, the opportunity to explore ideas through numerous images may help to achieve a more spontaneous yet controlled approach. Techniques for simplifying the comparison of both color and value will be practiced. *Written by, Kim English*

Working with a model, numerous small studies will be painted each day.

Cost: \$300.00 SWA members; Non-members \$350.00 non-SWA members; \$325.00 non-SWA members joining SWA.

William Schneider Workshop

September 14-15; 9:00 am–4:00 pm

This 2-day pastel workshop (oil painters are also welcome) will have demonstrations on painting the figure with examples of masterworks that embody the techniques discussed. This workshop will turbo-charge your understanding of drawing, value, color temperature, edge control and above all else—to loosen up! <https://schneiderart.com/workshops>

Cost: \$275 SWA members; \$330 non-SWA members; \$295; non-SWA members joining SWA.

Changes in Demo Schedule

Stella Zhang, who was scheduled to do her multi-media demo on October 19th, is now scheduled for December 7th.

Warren Chang, who was originally scheduled to do an oil portrait demo in January, will now do his demo on October 19th.

SWA March/April People's Choice: "The Tournament Director," an oil by William Ramroth

SWA April/May People's Choice: "Happy African Boy," an oil by Rema Mansi.

President’s Message–SJVC

I’d like to thank SWA San Bruno and volunteers for the preparations leading to the Annual Exhibition at the San Bruno Art Gallery. Some members of the Valley Chapter were included in the Exhibition. They are Marilyn Torchin, Bill Davis and Ron Jarvi. A secondary exhibit included the work by Rudy Murrietta, Maxine Fargason, and Sheryl Lewis. Thank you all for your commitment to SWA.

Recently, the SWA Valley Chapter attended a demonstration by Member, Marilyn Torchin. She reviewed her approach to Nonrepresentational Art and use of color. Marilyn provided attendees a chance to participate and create art with her approach to painting. Thank you, Marilyn, for your wonderful work and support.

Currently, we are preparing for our exhibition at the Ziveli Winery in Fresno. We open the exhibition with a reception on Friday, June 7th from 5:00 to 8:00 pm. I’ve appreciated the support that Ziveli Winery has provided our organization all year. They are a wonderful family and friends.

I hope the coming months bring you joy and success. Thank you all for sharing your art experiences and knowledge.

Jesus Sepulveda
President, SWA-SJVC

Bay Area Masters Exhibition

Congratulations to our member whose work was selected to be included in the Bay Area Masters Exhibition, sponsored by the Peninsula Museum of Art and juried by George Rivera, former director of the Triton Museum.

The exhibition will take place at the Fine Arts Galleria during the San Mateo County Fair at 1346 Saratoga Drive, San Mateo, California from June 8–16.



Optimism by Yvonne Newhouse

SAN FRANCISCO CHAPTER CONTACTS

SFC President/		
Gallery Coordinator	Sharon Harris	650-615-9856
1st Vice President/		
Signature Awards/		
Demos	Jim Stinger	650-493-6043
2nd Vice President/		
Publicity	Judy Puccini	650-737-6084
Secretary	Barbara Todd	650-369-6859
Web/Master	Sherry Vockel	650-922-7474
Treasurer/Rentals		
Director of Exhibits	Carrie Drilling	650-692-8998
Rentals	Jane Presta	650/872-0646
Corresponding		
Secretary	Doris Guzman	415-731-4038
Bulletin	Laura Johnson	650-533-1239
Membership	Loretta Hawkins	650-588-1154

SAN JOAQUIN CHAPTER CONTACTS

SJVC President	Jesus Sepulveda	559-438-7633
1st Vice President	Linda Lamb	559-275-1597
2nd Vice President	Rudy Murietta	559-709-0486
Secretary	Shirlee Rehart	559-436-4552
Phone/Membership	Maxine Fargason	559-439-4403
Treasurer	Denise McGill	559-229-3025

SCHEDULE OF EVENTS

SAN FRANCISCO CHAPTER

69th Annual Exhibit

June 5–August 4; Receiving June 1

Opening Reception June 22, 1–3 pm

Closing Reception August 4; 1:30–3 pm

June

15 Board Meeting/Teresa Ruzzo Demo

July

20 Board Meeting (if necessary)

27–28 Kim English Workshop

August/September Exhibit

August 14–September 20

Receiving August 10

SFC Center Hours: 11–3, Wednesday–Saturday

September/October Bulletin Deadline: August 3

2019 SFC SWA Exhibition and Workshop Schedule

SWA Board Meeting/Demo	January 19, 2019
January/February 2019	January 9– February 23, 2019; Receiving January 5, 2019
Rental/Lauri Smith	February 8; Center not open from 1–3
SWA Board Meeting/Demo	February 16, 2019
Rental/Maurine Xavier	February 22; Center not open from 1:30 – 5:30
San Mateo School District Exhibit	February 24–March 8; Reception March 1, 5 pm–7 pm
March/April 2019	March 13–April 12; Receiving March 9
SWA Board Meeting/Demo	March 16, 2019
Shirley Green Mini Workshop	March 23; 1–4
April/May 2019	April 17–May 31 (5 weeks); Receiving April 13
SWA Board Meeting/Demo	April 20, 2019
Camille Lapointe Lyons Workshop	April 27–28, 2019
Kathleen Alexander Rental	May 3–5, 2019
SWA Board Meeting/Demo	May 18, 2019
69th Annual Exhibit	June 5–August 4, 2019; Receiving June 1 Opening Reception June 22, 1–3 pm Closing Reception August 4, 1:30–3 pm
SWA Board Meeting/Demo	June 15, 2019
SWA Board Meeting	July 20, 2019—if necessary
Kim English Workshop	July 27–28
August/September 2019	August 14–September 20, 2019; Receiving August 10
William Schneider Workshop	September 14–15, 2019
September/October 2019	September 25–October 25; Receiving September 21, 2019
SWA Board Meeting/Demo	September 28, 2019
SWA Board Meeting/Demo	October 19, 2019
Skyline College Exhibit	October 26–November 27, 2019
SWA Board Meeting/Demo	December 7 2019
December/January	December 4–January 10, 2020; Receiving November 30, 2019

2019 SFC Demonstrations

February 16	Camille Lapointe Lyons	Watercolor Landscape Painting on Different Surfaces
March 16	Caroline Mustard	Painting with Gouache
April 20	Jim Gleeson	Abstracts Good and Bad
May 18	Jiyce Barron Leopardo	Critique
June 15	Teresa Ruzzo	Pastel Landscape with Sky and Clouds
September 28	Robin Scholl	A Sky Demo Using Gouache, Watercolor and Pastel
October 19	Warren Chang	Oil Demo with Live Model
December 7	Stella Zhang	Multi-media Demonstration

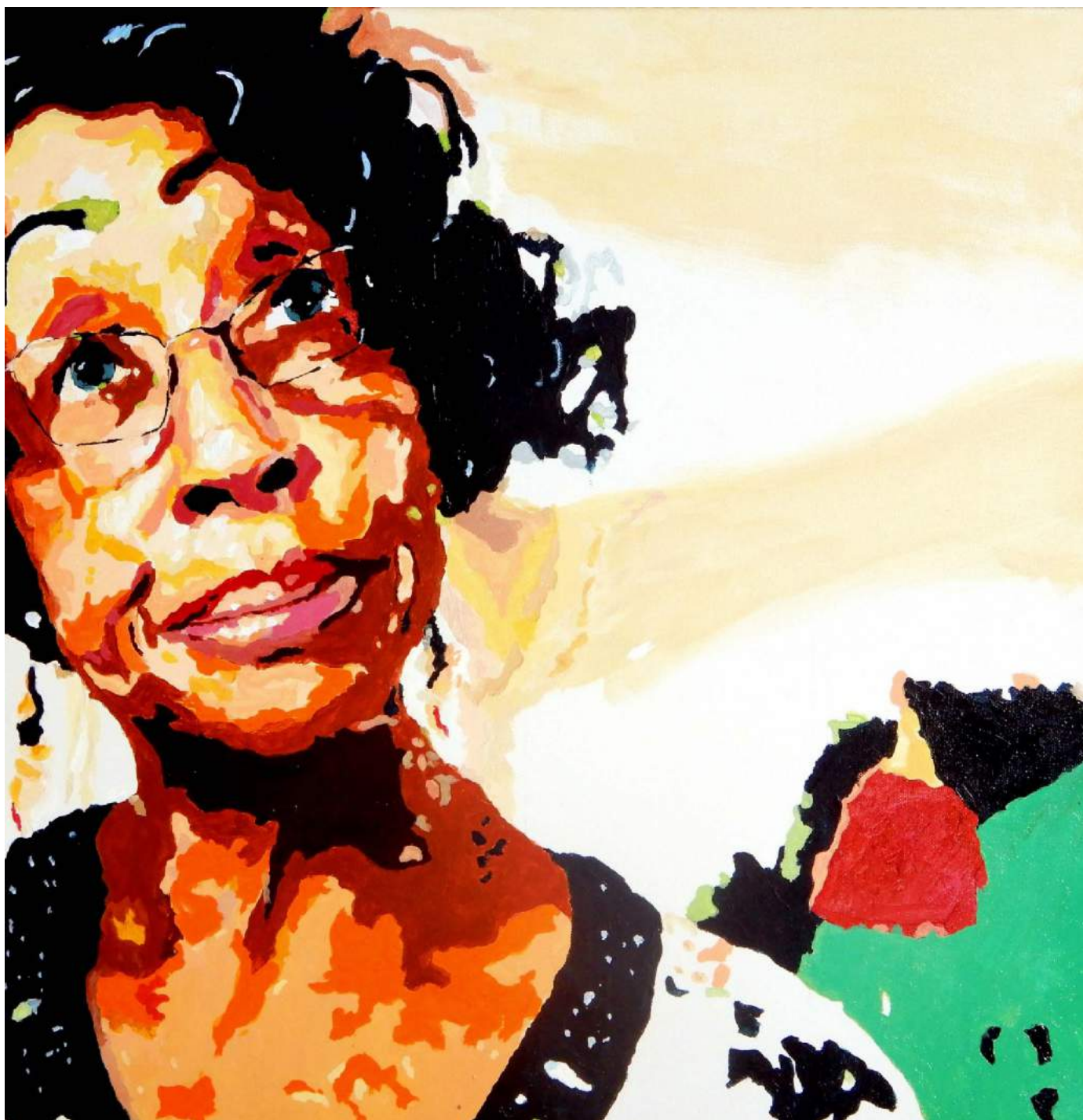
69th SWA Annual Exhibit



Best of Show
Roma Madonella
Watercolor by Guy Magallanes



Portrait Award
True Grit
Charcoal by Arena Shawn



1st Place Oil
All I Have to Say
Acrylic by Henri



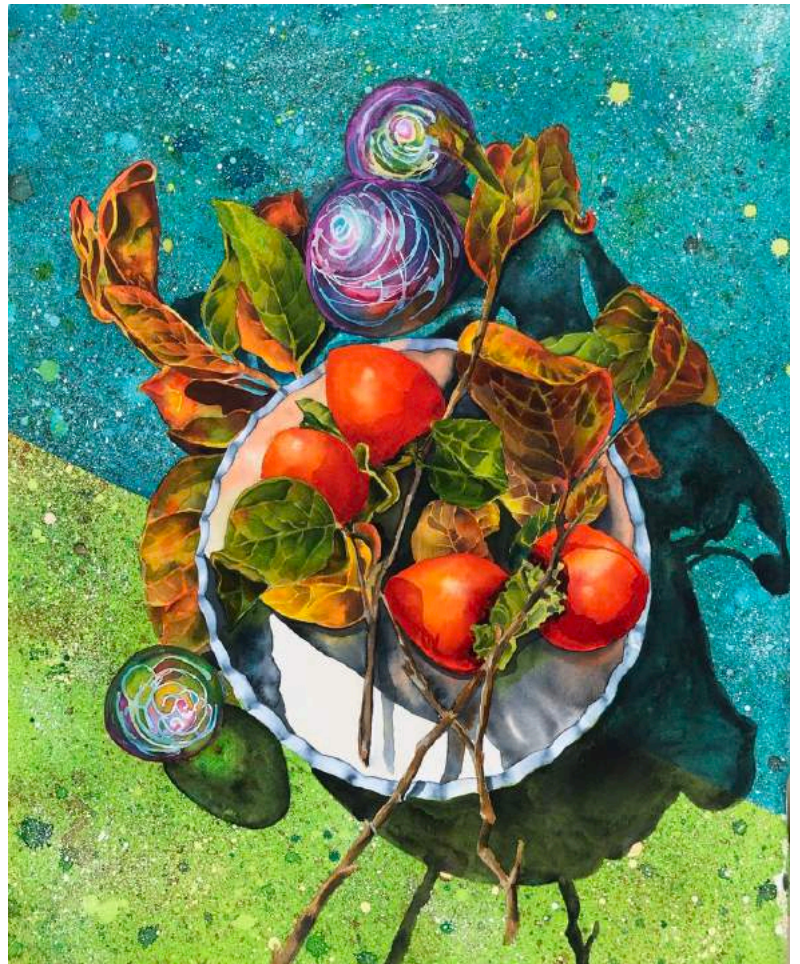
2nd Place Oil
Torita
By Romeo Washington



1st Place Water Media
Coastal View
Watercolor by Jane Hofstetter SWA



2nd Place
Water Media
Epiphyllum Beauty
Watercolor by
Carrie Drilling SWA



3rd Place
Water Media
Twists and Turns
Watercolor by Shirley
Green SWA



1st Place Pastel/Mixed Media

Professor Flockmocker

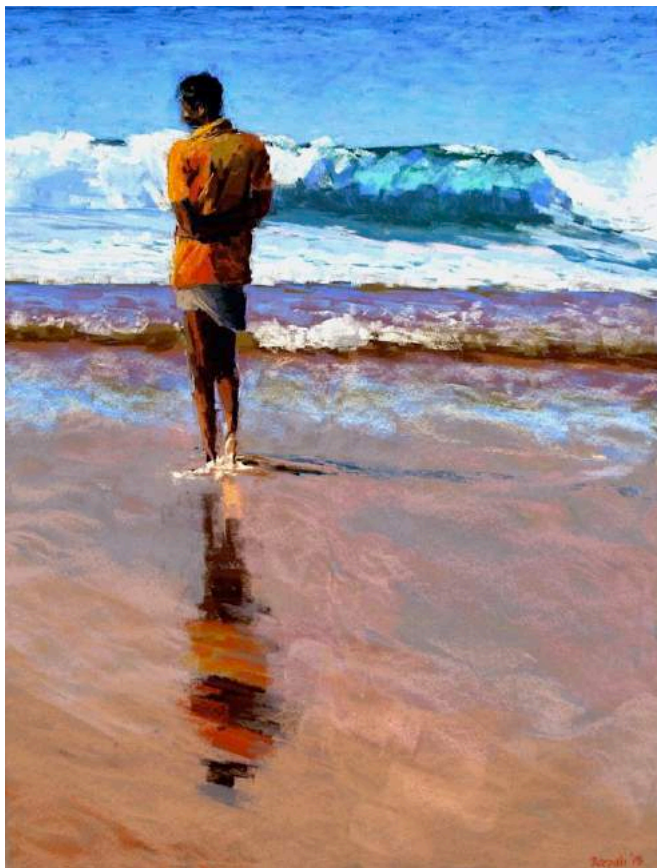
Mixed Media by John Barrows



2nd Place Pastel/Mixed Media

Homage to King Cuong

Pastel by Gerald Boyd SWA



3rd Place Pastel/Mixed Media
Reflections
Pastel by Deepali Kapatkar SWA

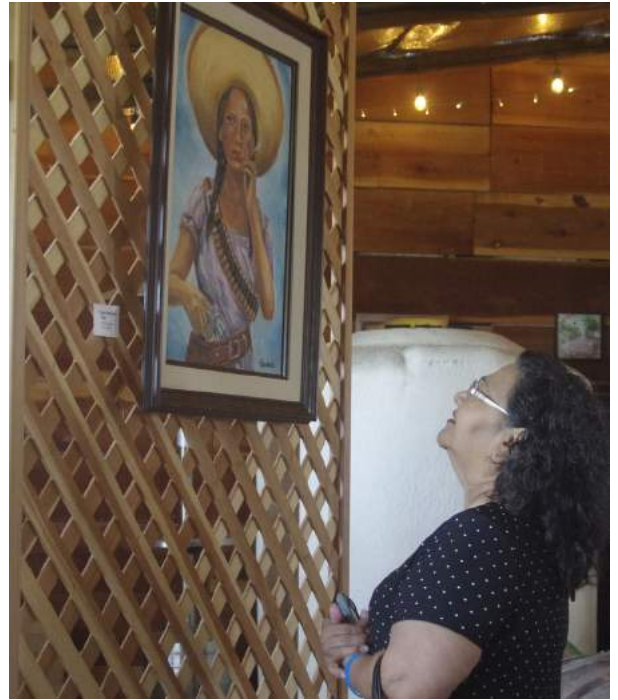


1st Place Non-Representational

Send in the Clowns

Mixed Media by Marilyn Torchin

Images from the SJVC Ziveli Winery Exhibit



69th Annual Exhibit Winners

Best of Show	Guy Magallanes	Roma Madonella	Watercolor
Portrait Award	Arena Shawn	True Grit	Charcoal
Oil			
1st Place	Henri	All I Have to Say	Acrylic
2nd Place	Romeo Washington	Torita	Oil
Water Media			
1st Place	Jane Hofstetter SWA	Coastal View	Watercolor
2nd Place	Carrie Drilling SWA	Epiphyllum Beauty	Watercolor
3rd Place	Shirley Green SWA	Twists and Turns	Watercolor
Pastel/Mixed Media			
1st Place	John Barrows	Professor Flockmocker	Mixed Media
2nd Place	Gerald Boyd SWA	Homage to King Cuong	Pastel
3rd Place	Deepali Kapatkar SWA	Reflections	Pastel
Non-Representational			
1st Place	Marilyn Torchin	Send in the Clowns	Watercolor

Thank you to Judges—Dmitry Grudsky SWA, Terri Ford and Linda Harris SWA

Participants: Edna Acri SWA, Trowzers Akimbo, Tomiko Bailey SWA, John Barrows, Gerald Boyd SWA, Carrie Drilling SWA, Lynn Flodin, Stephanie Getzler, Jim Gleeson SWA, Shirley Green SWA, Sharon Slusarz Harris SWA, Henri, Jane Hofstetter SWA, Ron Jarvi SWA, Deepali Kapatkar SWA, Joyce Barron Leopardo SWA, Diane Liguori, Guy Magallanes, Rema Mansi, Leona Moriarty SWA, Rose Nieponice, Christine Ong-Dijcks, William Ramroth, Arena Shawn, Deborah Shea, Fran Simontacchi, Marilyn Torchin, Sherry Vockel SWA and Romeo Washington

A Big Thank You to the Volunteers: Sherry Vockel, Yvonne Newhouse, Judy Puccini, Sharon Harris, Fran Simontacchi, Jane Presta, Deepali Kapatkar, Jesus Sepulveda, Bill Davis, Rudy Murrietta, Gerald Boyd, Edna Acri and LaVay Norquist

The Bulletin is published 6 times per year (Jan/Feb, Mar/Apr, May/June, Jul/Aug, Sep/Oct, Nov/Dec)

Advertise your workshops, classes, etc.

Rates: \$10 per ad per newsletter—50 word maximum; \$20 per ad over 50 words. Make checks payable to SWA.

Deadlines for ads and news is the 5th of Dec (Jan/Feb), Feb (Mar/Apr), Apr (May/June) Jun (Jul/Aug), Aug (Sep/Oct), Oct (Nov/Dec).

No brochures or printed matter accepted. Please type your ad and send with your check to: Laura Johnson, 3408 Beresford Ave., Belmont, CA 94002. You may send info to dollsinmin@gmail.com. Check must be received before your ad can be published.

Directions to SWA San Bruno

From 280: take the San Bruno Exit east (towards the Airport). At San Mateo Avenue (approximately 1/4 mile) turn right on San Mateo Avenue.

From 101: exit San Bruno Avenue west over the freeway. San Mateo Avenue is immediately after the CalTrain elevated track, turn left. Caltrain station is two blocks south on San Mateo Avenue.